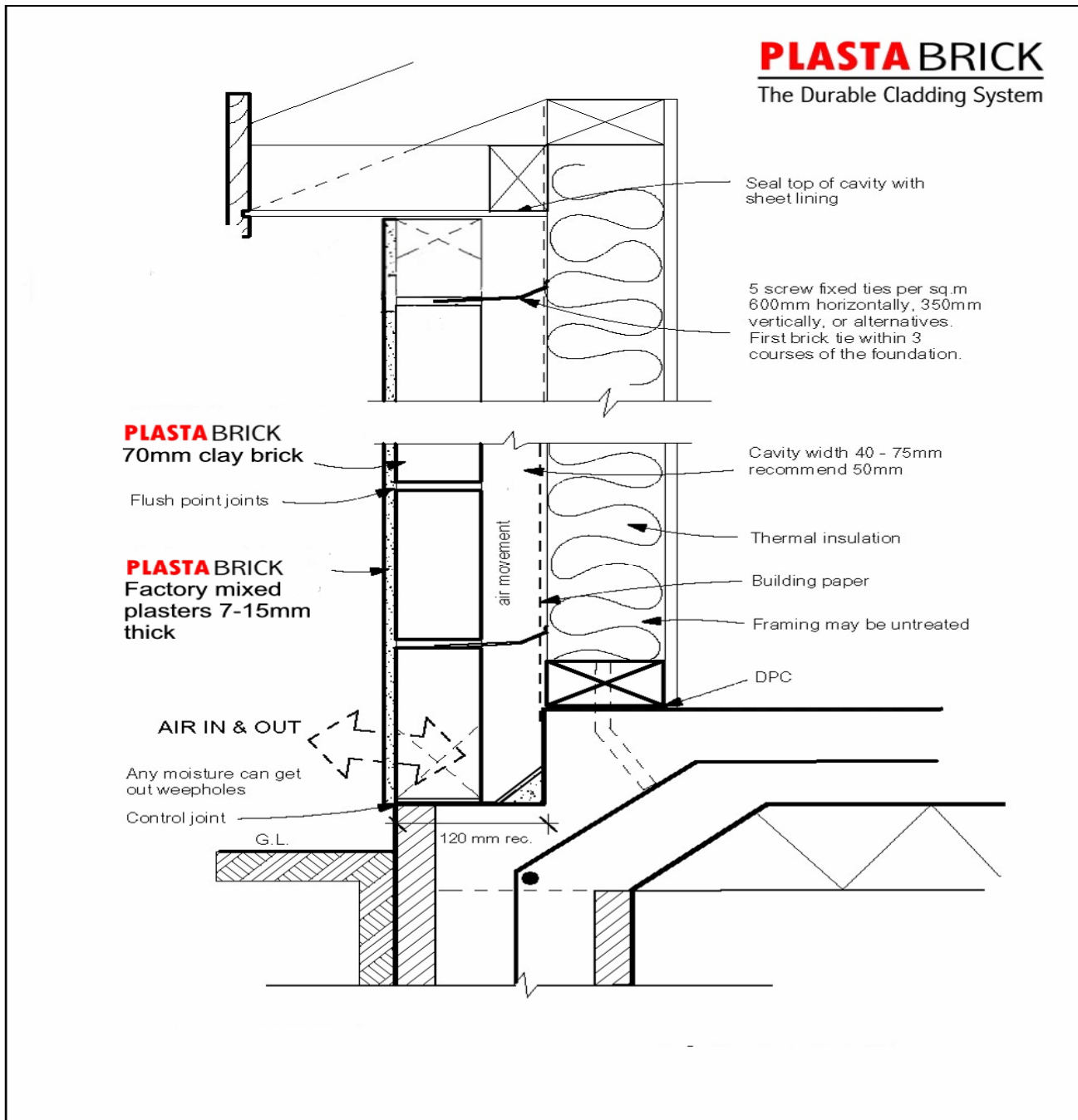


# PLASTABRICK

## Cladding Systems

### Plastabrick Site Manual

Version 4 December 2004



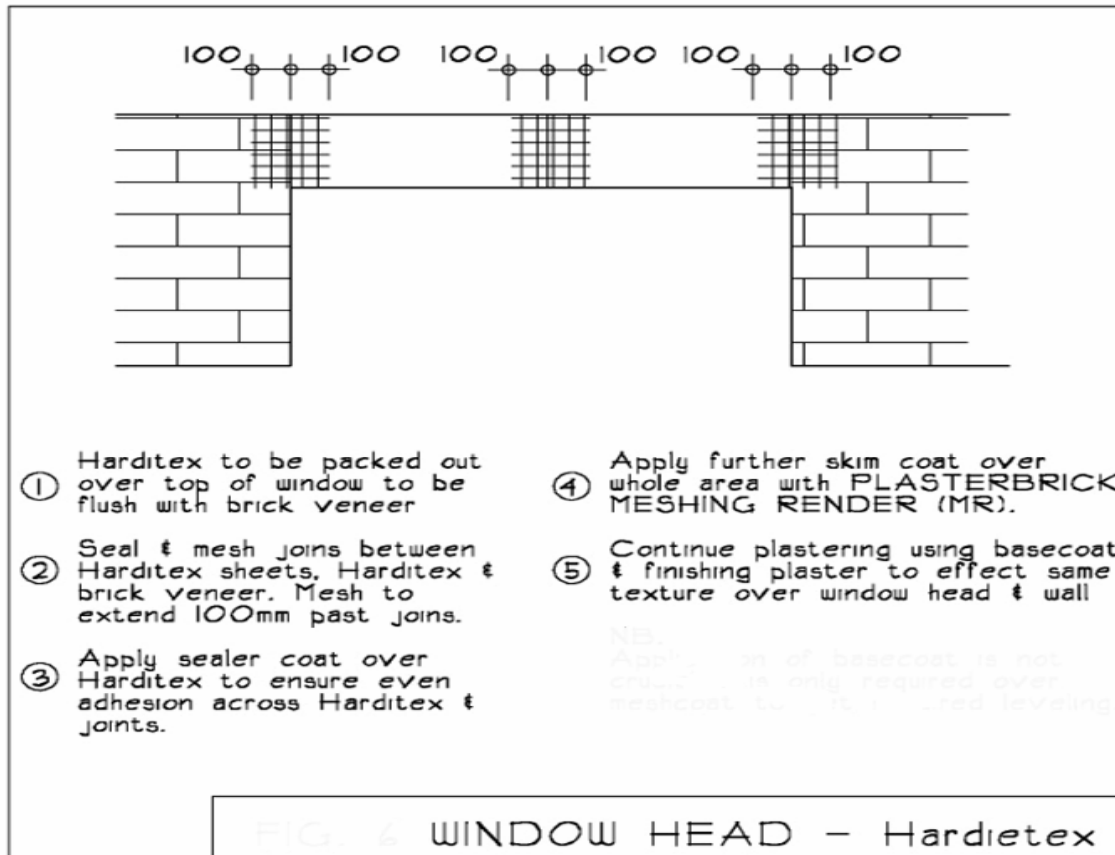
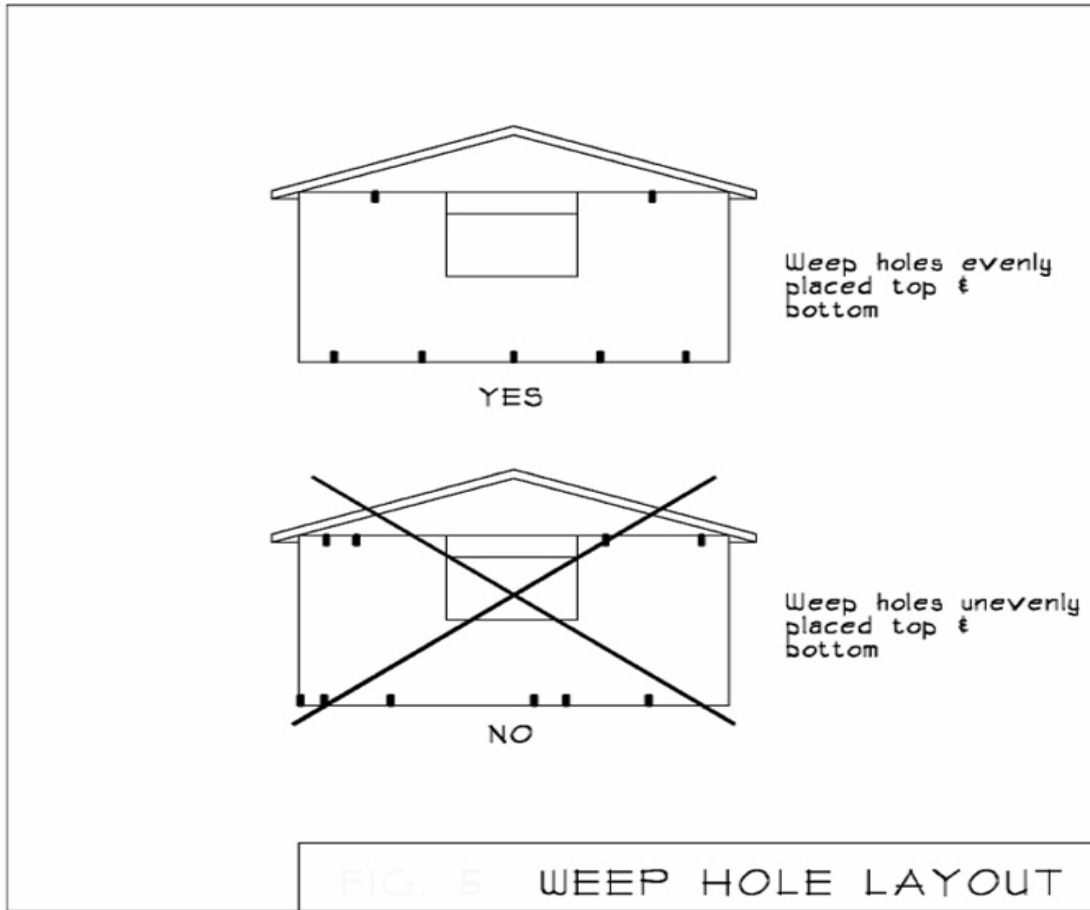
## Plastabrick General Specification

(For inclusion in design/building consent application)

**“70 series clay brick installed and plastered per Plastabrick Manual – 2005 –  
final colour and texture selected**

Plastabrick manual 2005-10-28

Author – Trent mason



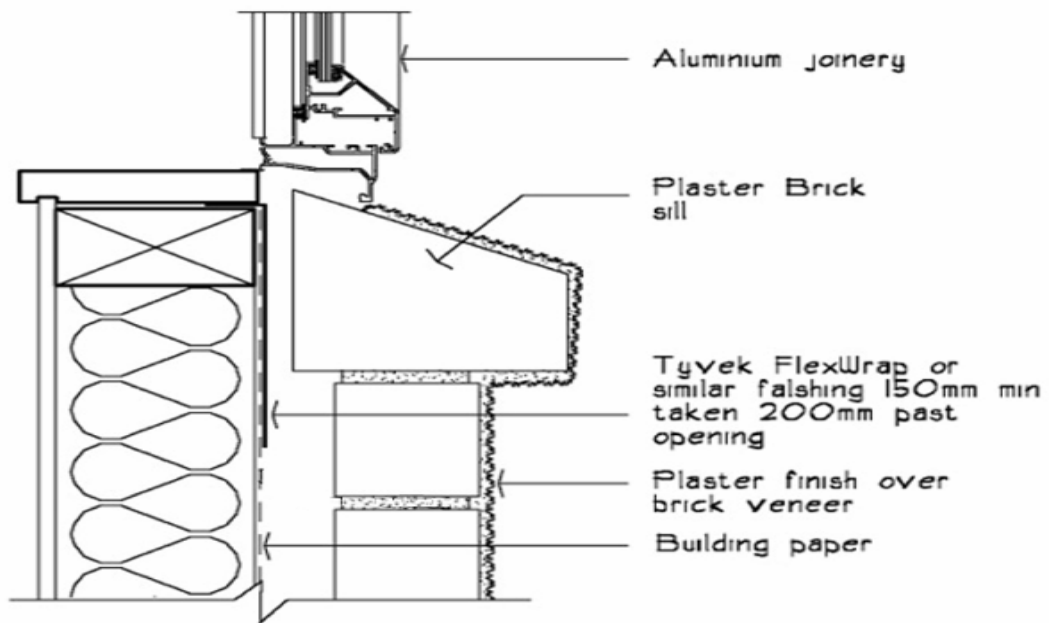
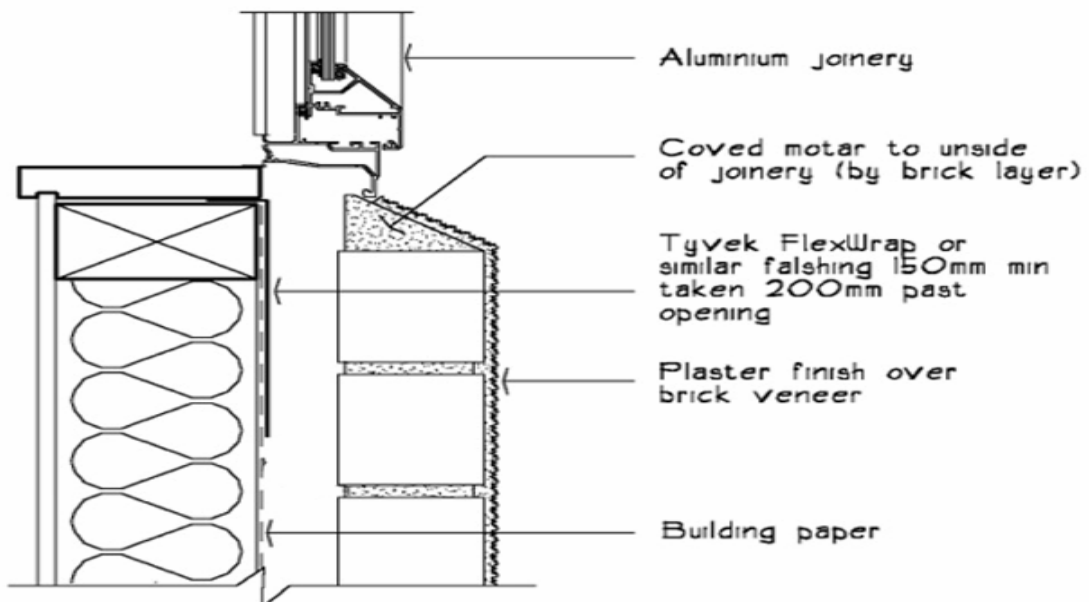
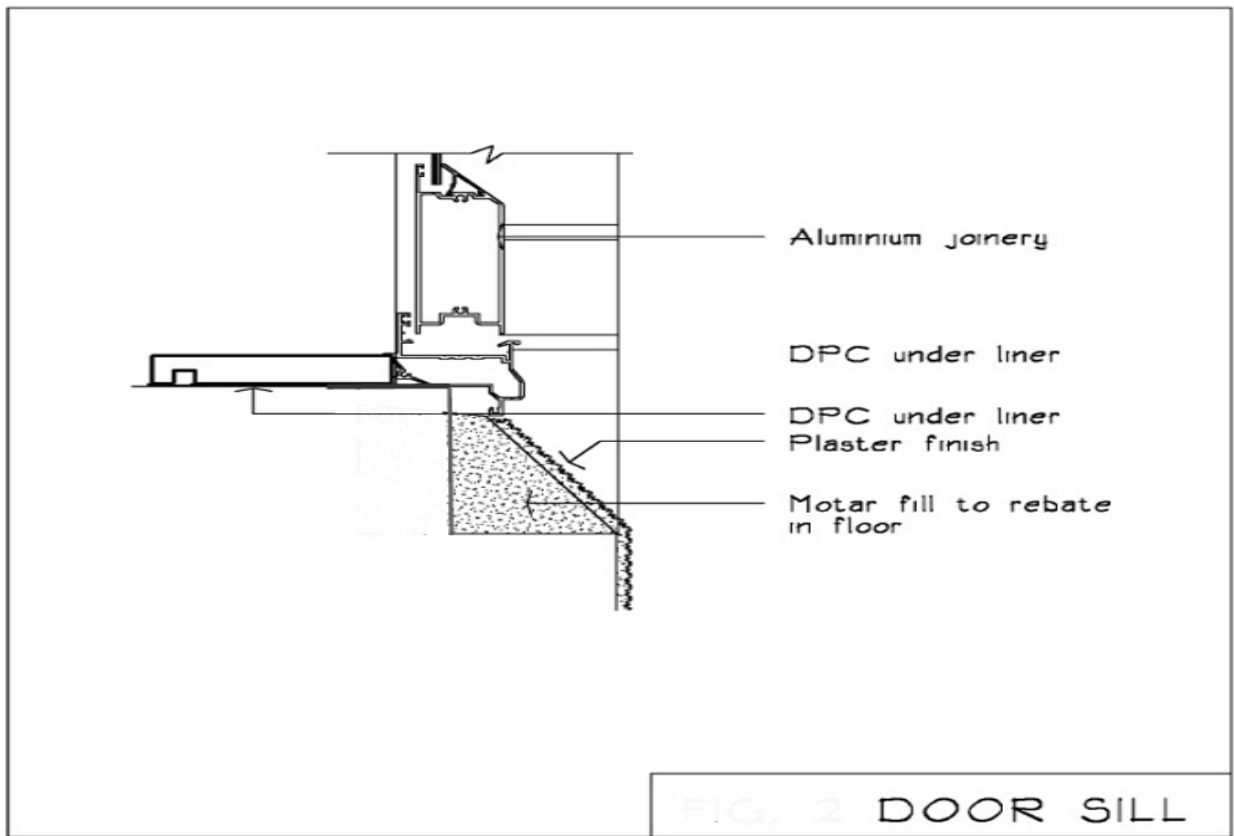


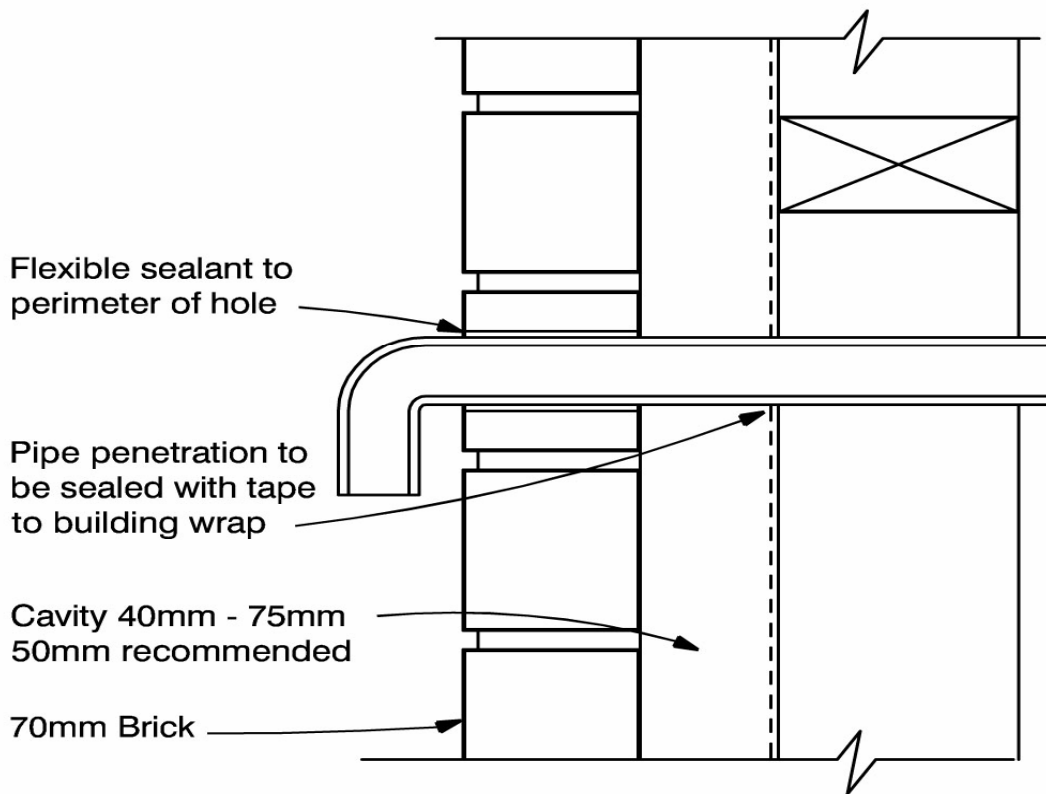
FIG. 4 WINDOW SILL - Brick



WINDOW SILL - Raking



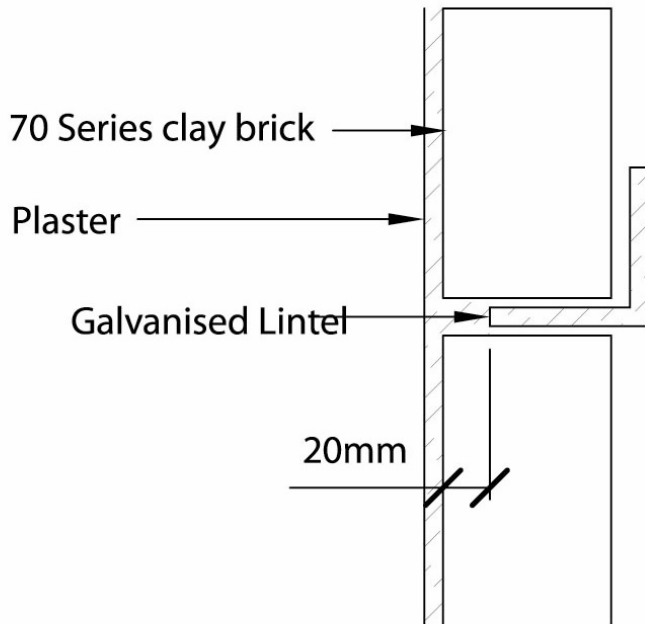
**FIG. 15 TYPICAL PIPE PENETRATION**



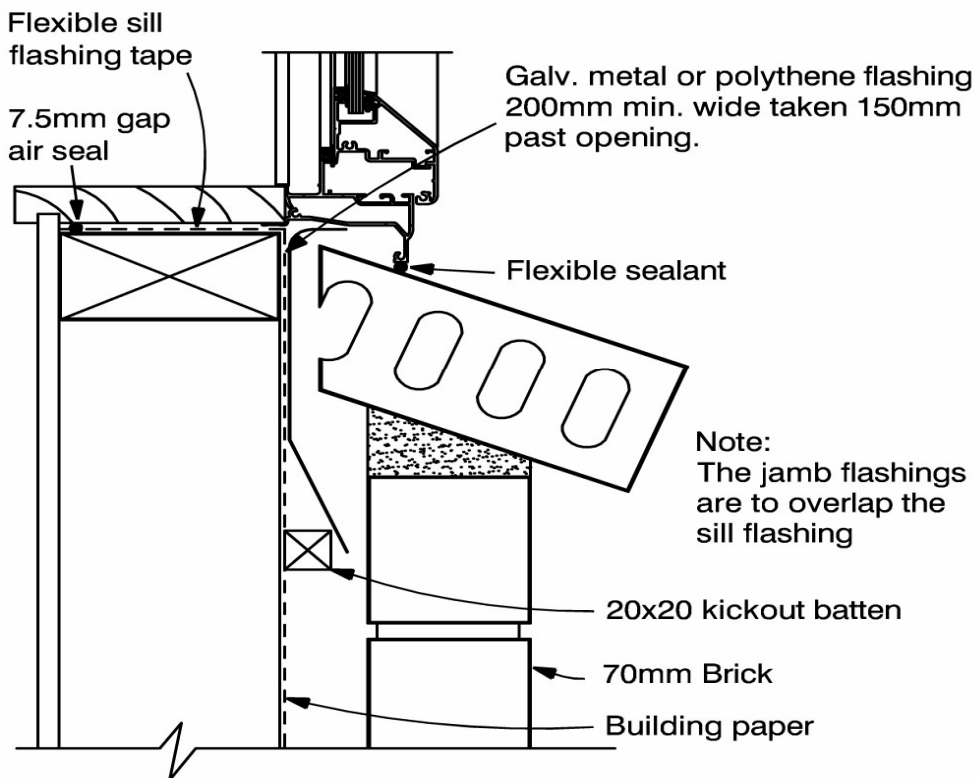
## Fig 2: Lintel Detail

### Important Note:

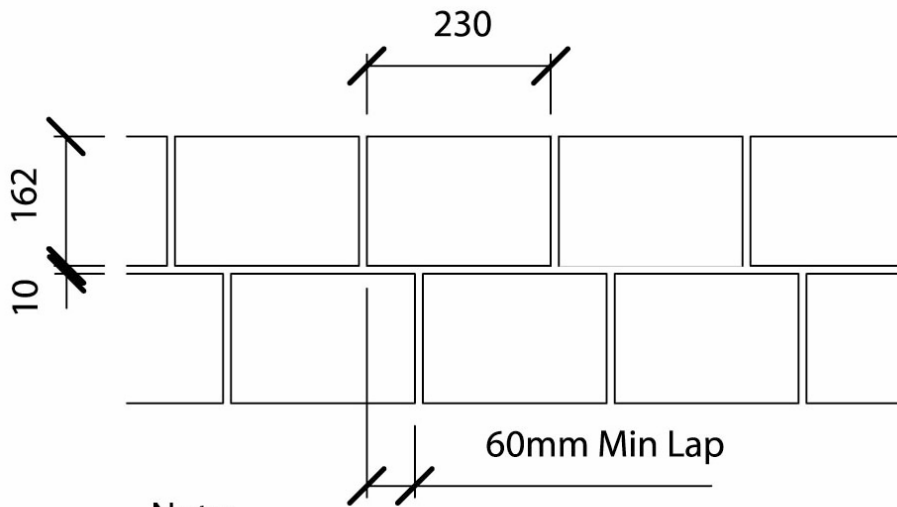
If the steel lintel is fixed to the timber lintel, it must not also be in the mortar course but left 5mm short of the opening at both ends.



## FIG. 13 WINDOW SILL - Aluminium



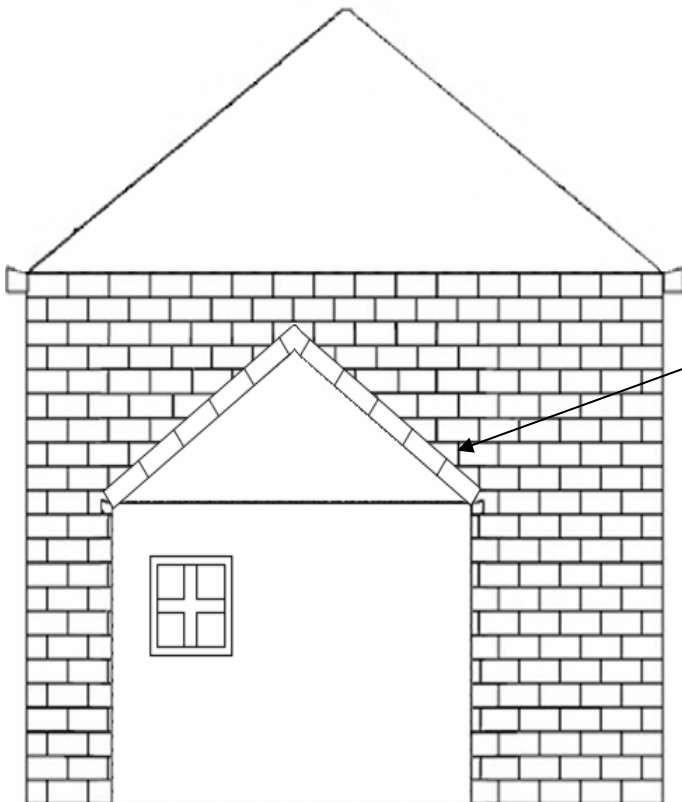
## Bonding of Bricks



### Note:

Situations do occur when bricks must be stack bonded or the minimum 60mm lap cannot be achieved. However this should always be the exception and avoided where possible. Use 'Snakewire' and extra ties in these areas.

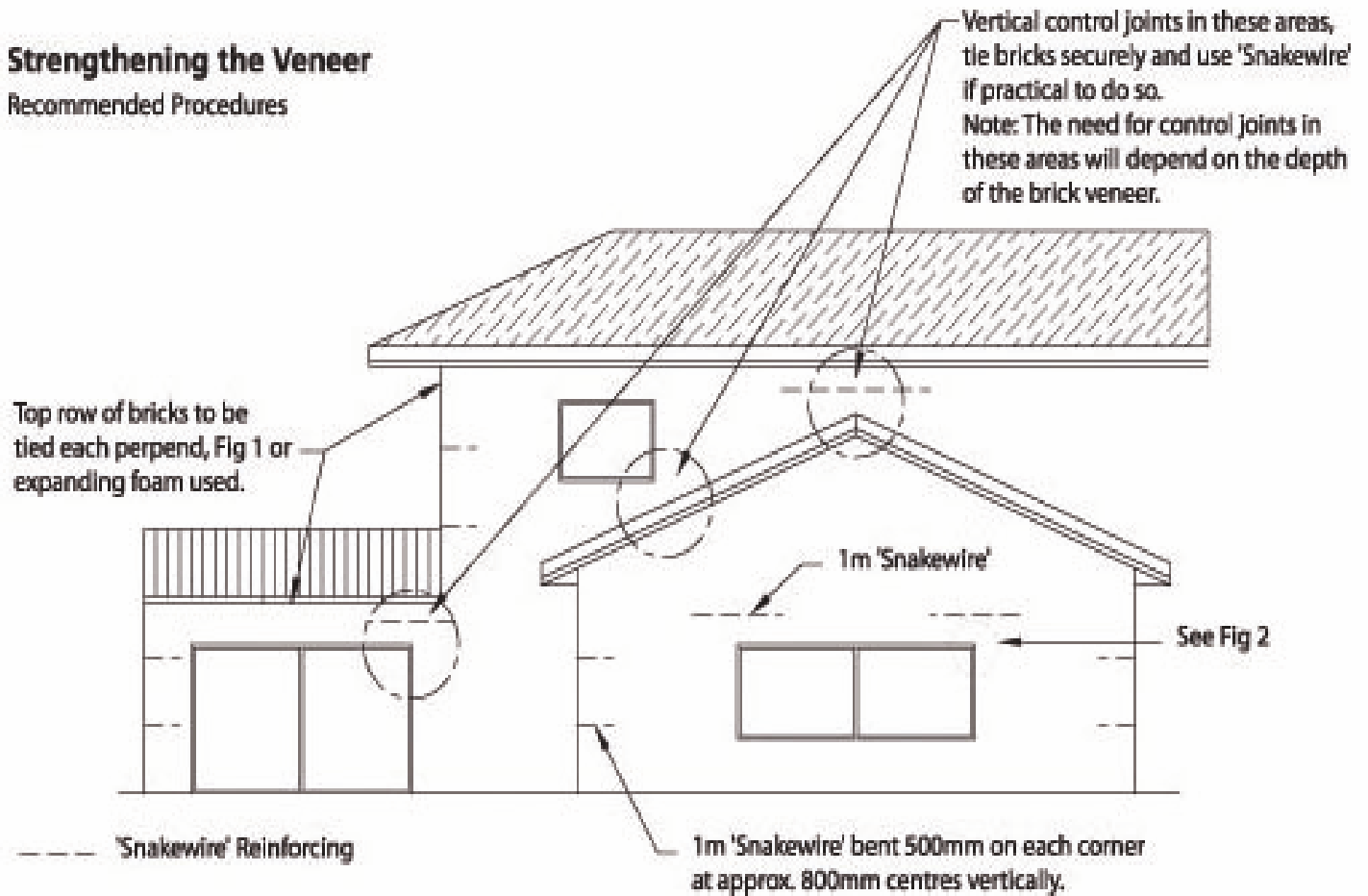
## BRICKWORK OVER ROOFTOPS



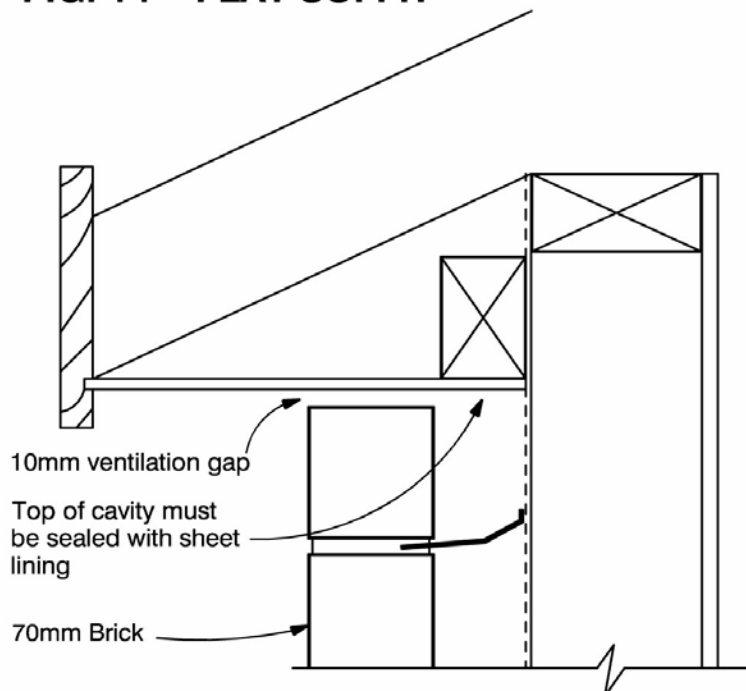
Brick - laid stretcher bond over steel lintel, this will help give plasterers a straight line to plaster to.

## Strengthening the Veneer

### Recommended Procedures



**FIG. 14 FLAT SOFFIT**



## FIG. 16 METER BOX INSTALLATION

200mm Supercourse  
500 flashing taped to  
meter box, extend  
100mm each side

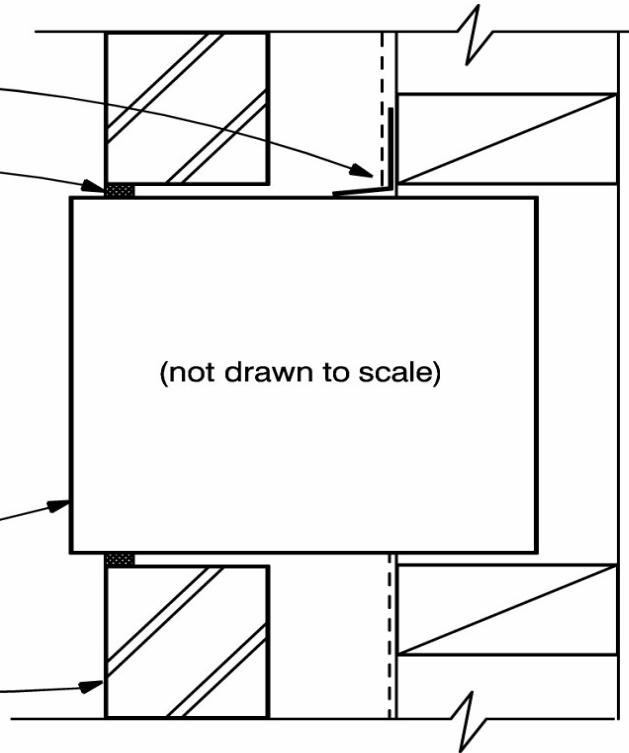
Flexible sealant to  
perimeter of box

Note:

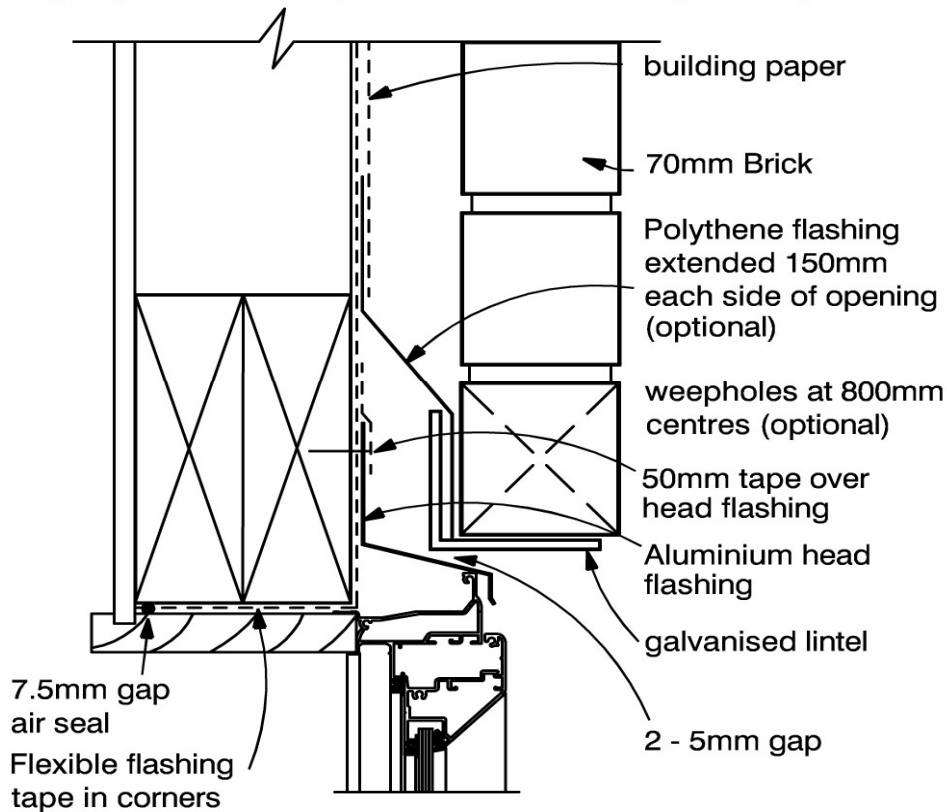
Sides of meter box  
flashed with 200mm  
Supercourse 500  
and taped

Meter box

70mm Brick



## FIG. 9 WINDOW HEAD - Aluminium



## FIG. 11 CONCRETE SLAB & FOUNDATION Min. Required for 1 & 2 Storey

Recommend mortared slope with 2 coats Bitumen Emulsion

Min. 100mm to paved ground

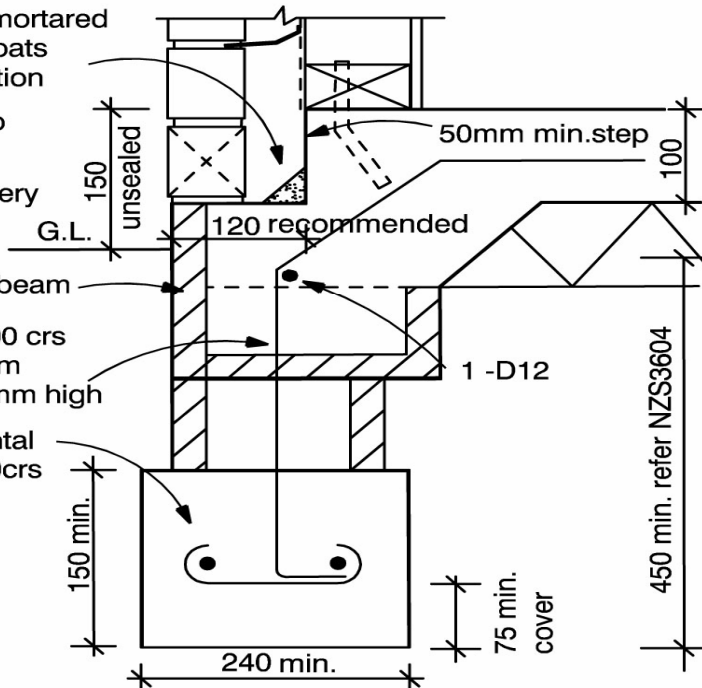
Weepholes every third perpend

250mm bond beam

D10 bars at 600 crs max. ht. 500mm

D12 over 600mm high

2- D12 horizontal with R6 @ 600crs



## FIG. 12 WINDOW JAMB - Aluminium

